

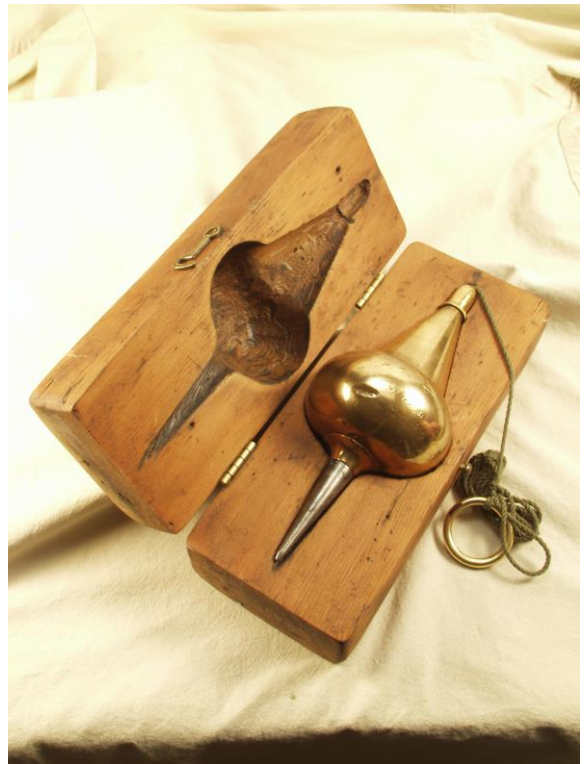
PLUMB BOB COLLECTOR'S CALENDAR 2014

WOLF'S PLUMB BOB NEWS 2014-01 SPECIAL EDITON

INTERESTING PLUMB BOBS FROM THE NELSON DENNY † COLLECTION

My friend Nelson had an outstanding collection of plumb bobs, which was sold after his death in several auctions by Martin Donnelly. Nelson had taken beautiful pictures that he always wanted to publish in an Internet site. I have attached some nice photos of specimens from Nelson Denny's exceptionally detailed inventory records. The "#" beneath each monthly plumb bob photo is the actual inventory number which Nelson assigned to these plumb bobs in his collection.

Figure right: # 281. "COMMON SENSE" plumb bob with carved box.



Wolfgang Ruecker

www.plumbbobcollectors.info

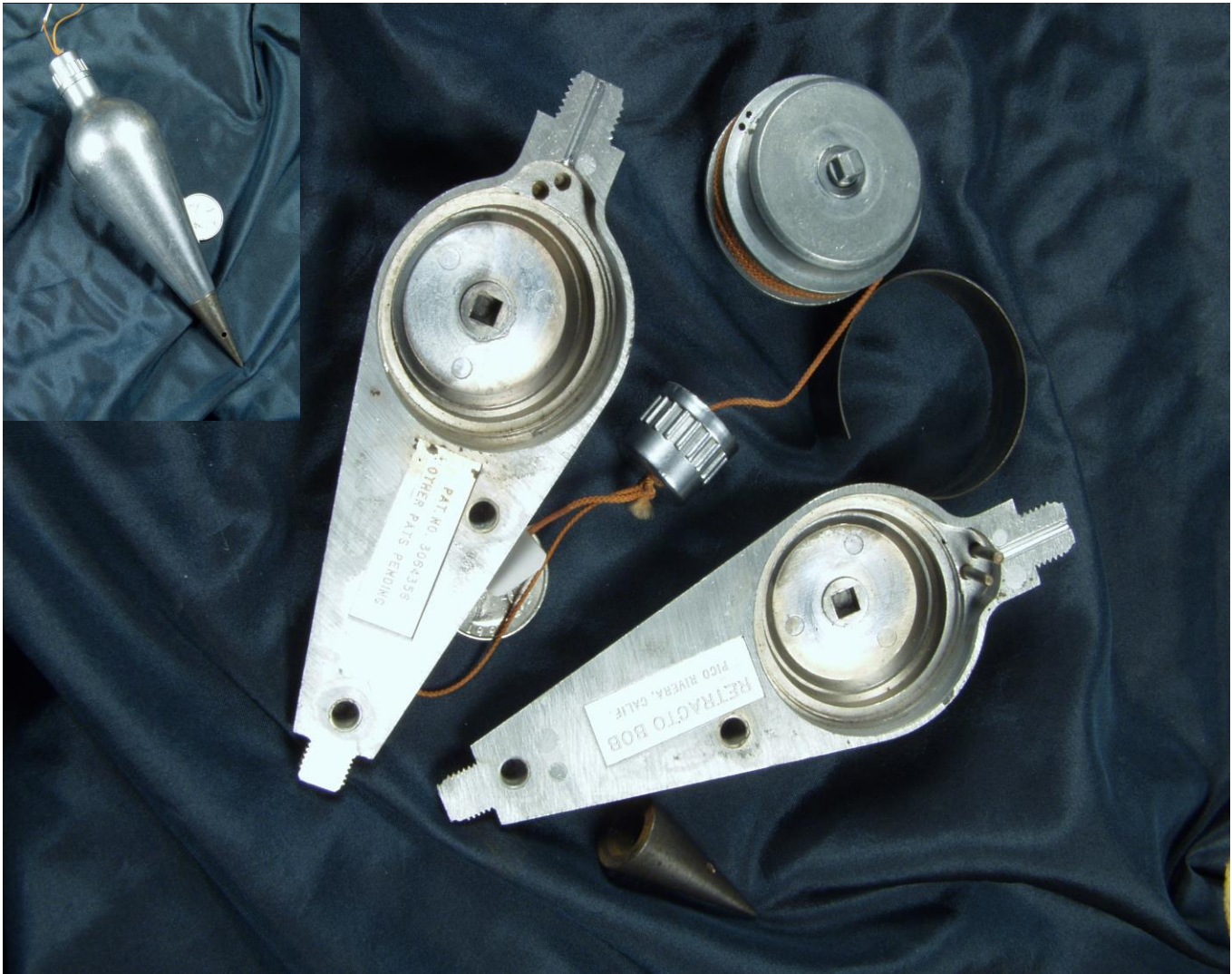
plumbbobwolf@t-online.de



14. BUFF & BERGER mining plummets

January 2014

| Su | Mo | Tu | We | Th | Fr | Sa |
|----|----|----|----|----|----|----|
| | | | 1 | 2 | 3 | 4 |
| 5 | 6 | 7 | 8 | 9 | 10 | 11 |
| 12 | 13 | 14 | 15 | 16 | 17 | 18 |
| 19 | 20 | 21 | 22 | 23 | 24 | 25 |
| 26 | 27 | 28 | 29 | 30 | 31 | |



671. KRUSE patent US3,064,356 retractable plumb bob, 1962

February 2014

| Su | Mo | Tu | We | Th | Fr | Sa |
|----|----|----|----|----|----|----|
| | | | | | | 1 |
| 2 | 3 | 4 | 5 | 6 | 7 | 8 |
| 9 | 10 | 11 | 12 | 13 | 14 | 15 |
| 16 | 17 | 18 | 19 | 20 | 21 | 22 |
| 23 | 24 | 24 | 26 | 27 | 28 | |



229. Spectacular, crisply detailed, plumb bob within plumb bob. Unscrew the ornate steel tip and remove the main body, which houses an equally, but smaller, ornate plumb bob. Exquisite craftsmanship and design.

March 2014

| Su | Mo | Tu | We | Th | Fr | Sa |
|----|----|----|----|----|----|----|
| | | | | | | 1 |
| 2 | 3 | 4 | 5 | 6 | 7 | 8 |
| 9 | 10 | 11 | 12 | 13 | 14 | 15 |
| 16 | 17 | 18 | 19 | 20 | 21 | 22 |
| 23 | 24 | 24 | 26 | 27 | 28 | 29 |
| 30 | 31 | | | | | |



684. 15 LB. Railroad bob, full body taper, separate threaded height adjuster.

April 2014

| Su | Mo | Tu | We | Th | Fr | Sa |
|----|----|----|----|----|----|----|
| | | 1 | 2 | 3 | 4 | 5 |
| 6 | 7 | 8 | 9 | 10 | 11 | 12 |
| 13 | 14 | 15 | 16 | 17 | 18 | 19 |
| 20 | 21 | 22 | 23 | 24 | 24 | 26 |
| 27 | 28 | 29 | 30 | | | |



693. SNEBOLD patent 1899

May 2014

| Su | Mo | Tu | We | Th | Fr | Sa |
|----|----|----|----|----|----|----|
| | | | | 1 | 2 | 3 |
| 4 | 5 | 6 | 7 | 8 | 9 | 10 |
| 11 | 12 | 13 | 14 | 15 | 16 | 17 |
| 18 | 19 | 20 | 21 | 22 | 23 | 24 |
| 25 | 26 | 27 | 28 | 29 | 30 | 31 |



224. Massive, hollow, “arrow through apple” millwright’s plumb bob.

June 2014

| Su | Mo | Tu | We | Th | Fr | Sa |
|----|----|----|----|----|----|----|
| 1 | 2 | 3 | 4 | 5 | 6 | 7 |
| 8 | 9 | 10 | 11 | 12 | 13 | 14 |
| 15 | 16 | 17 | 18 | 19 | 20 | 21 |
| 22 | 23 | 24 | 24 | 26 | 27 | 28 |
| 29 | 30 | | | | | |

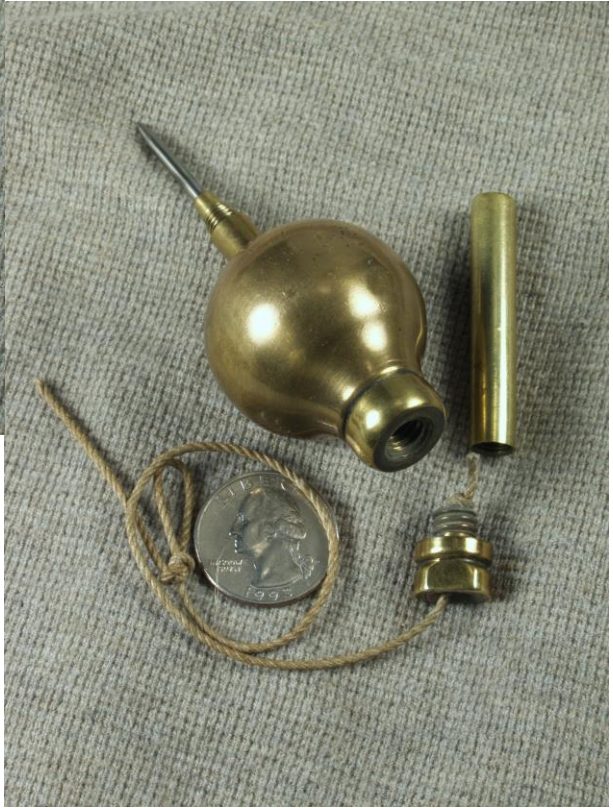


678. DREYFUS.

Plumb bob made with marked parts from a 1867 patented oil cup ☺

July 2014

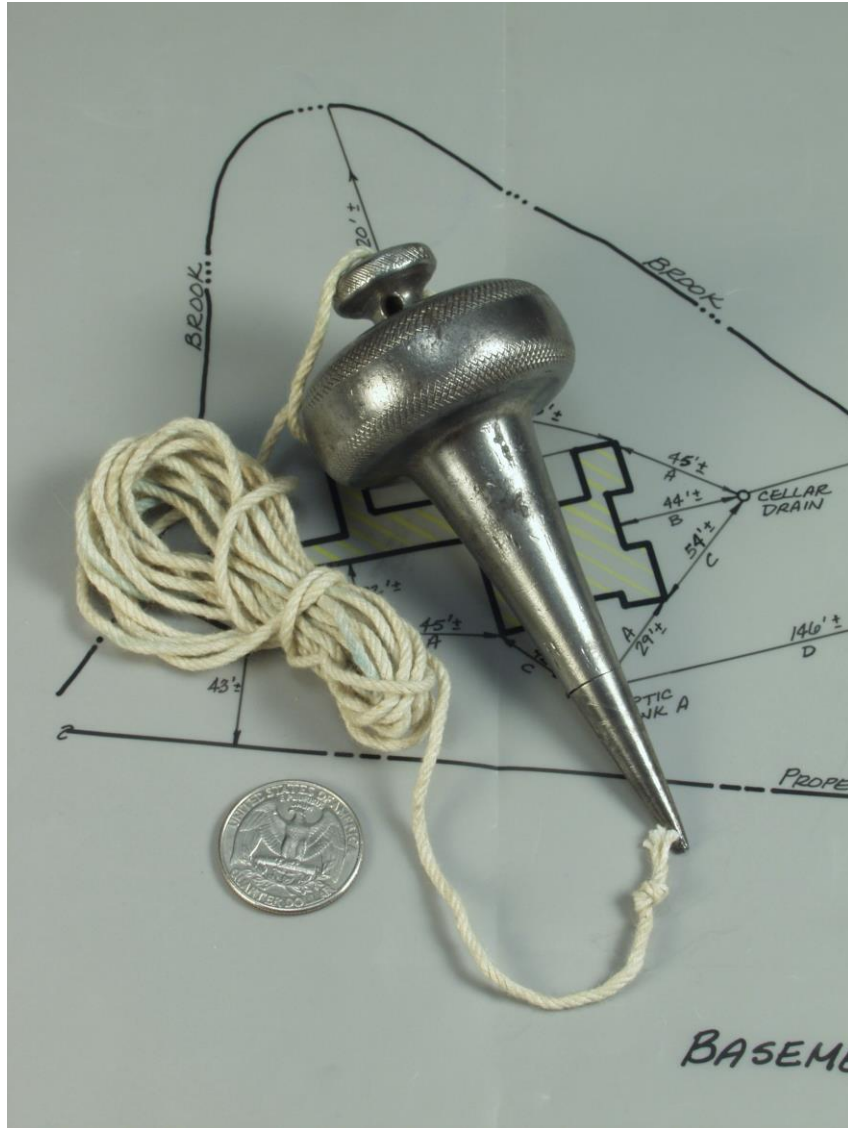
| Su | Mo | Tu | We | Th | Fr | Sa |
|----|----|----|----|----|----|----|
| | | 1 | 2 | 3 | 4 | 5 |
| 6 | 7 | 8 | 9 | 10 | 11 | 12 |
| 13 | 14 | 15 | 16 | 17 | 18 | 19 |
| 20 | 21 | 22 | 23 | 24 | 24 | 26 |
| 27 | 28 | 29 | 30 | 31 | | |



126. Early English spherical plumb bob with tip cover.

August 2014

| Su | Mo | Tu | We | Th | Fr | Sa |
|----|----|----|----|----|----|----|
| | | | | | 1 | 2 |
| 3 | 4 | 5 | 6 | 7 | 8 | 9 |
| 10 | 11 | 12 | 13 | 14 | 15 | 16 |
| 17 | 18 | 19 | 20 | 21 | 22 | 23 |
| 24 | 24 | 26 | 27 | 28 | 29 | 30 |
| 31 | | | | | | |



125. Unique and wonderful shape. Fixed cap with 3 bands of knurling.

September 2014

| Su | Mo | Tu | We | Th | Fr | Sa |
|----|----|----|----|----|----|----|
| | 1 | 2 | 3 | 4 | 5 | 6 |
| 7 | 8 | 9 | 10 | 11 | 12 | 13 |
| 14 | 15 | 16 | 17 | 18 | 19 | 20 |
| 21 | 22 | 23 | 24 | 24 | 26 | 27 |
| 28 | 29 | 30 | | | | |



208. PERFECTION plumb bob, patented, April 25, 1905, 3-1/8", 12-7/8 oz. Purchased in snug fitting simple turned wood case. Crack in case does not spoil thread function. Decorative "dado turning" below joint of top and bottom halves. Made by TOWER & LYON, NEW YORK

October 2014

| Su | Mo | Tu | We | Th | Fr | Sa |
|----|----|----|----|----|----|----|
| | | | 1 | 2 | 3 | 4 |
| 5 | 6 | 7 | 8 | 9 | 10 | 11 |
| 12 | 13 | 14 | 15 | 16 | 17 | 18 |
| 19 | 20 | 21 | 22 | 23 | 24 | 25 |
| 26 | 27 | 28 | 29 | 30 | 31 | |



481. Rare hexagonal w/ "clockworks" internal winding mechanism and key.
KNAUS patent 3,027,977 – 1962

November 2014

| Su | Mo | Tu | We | Th | Fr | Sa |
|----|----|----|----|----|----|----|
| | | | | | | 1 |
| 2 | 3 | 4 | 5 | 6 | 7 | 8 |
| 9 | 10 | 11 | 12 | 13 | 14 | 15 |
| 16 | 17 | 18 | 19 | 20 | 21 | 22 |
| 23 | 24 | 24 | 26 | 27 | 28 | 29 |
| 30 | | | | | | |



238. Plumb bob with fancy neck winder "L.C. BOLEN" on bob body.

December 2014

| Su | Mo | Tu | We | Th | Fr | Sa |
|----|----|----|----|----|----|----|
| | 1 | 2 | 3 | 4 | 5 | 6 |
| 7 | 8 | 9 | 10 | 11 | 12 | 13 |
| 14 | 15 | 16 | 17 | 18 | 19 | 20 |
| 21 | 22 | 23 | 24 | 24 | 26 | 27 |
| 28 | 29 | 30 | 31 | | | |

DEAR READER OF THE PLUMB BOB NEWS,
DEAR FELLOW COLLECTOR,

This is an article of the monthly published WOLF'S PLUMB BOB NEWS that is sent on demand as PDF-file attachment by email. FREE.

You can see all former publications on the website www.plumbbobcollectors.info on sub page "download publications".

Remarks and contact by email: plumbbobwolf@t-online.de

Enjoy it
Wolf Ruecker



Logo of the IPBCA INTERNATIONAL PLUMB BOB COLLECTORS ASSOCIATION.

For us THE WORLD TURNS AROUND THE PLUMB BOB