

PATENT NEWS especially for PLUMB BOB COLLECTORS

WR PATENT NEWS # 2007-45

PATENT US584803 WILCOX 1897 PLUMB BOB

Plumb bobs with reel

The following patent is more than 110 years old. Thanks to Nelson Denny for the pictures.

UNITED STATES PATENT OFFICE.

SAMUEL W. WILCOX, OF MENDON, MASSACHUSETTS.

PLUMB-BOB.

SPECIFICATION forming part of Letters Patent No. 584,803, dated June 22, 1897.

Application filed February 6, 1897. Serial No. 622,296. (No model.)

(No Model.)

S. W. WILCOX.
PLUMB BOB.

No. 584,803.

Patented June 22, 1897.

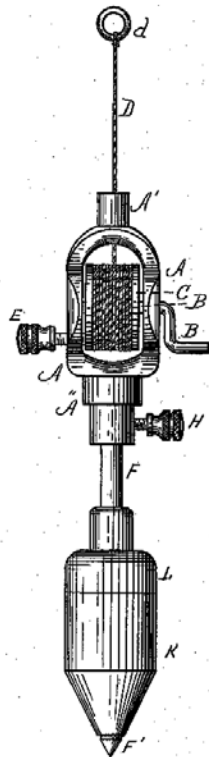


FIG. 1

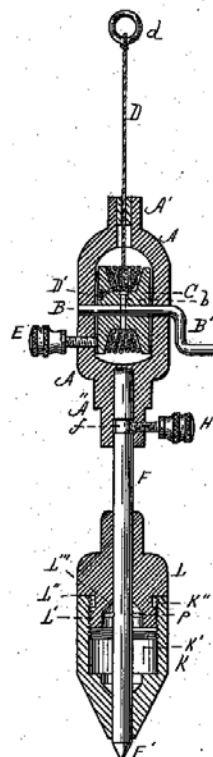


FIG. 2.

WITNESSES.

A. W. Boney
C. G. Baylson

INVENTOR

Samuel W. Wilcox
By his Atty.
Henry C. Williams

PATENT NEWS especially for PLUMB BOB COLLECTORS

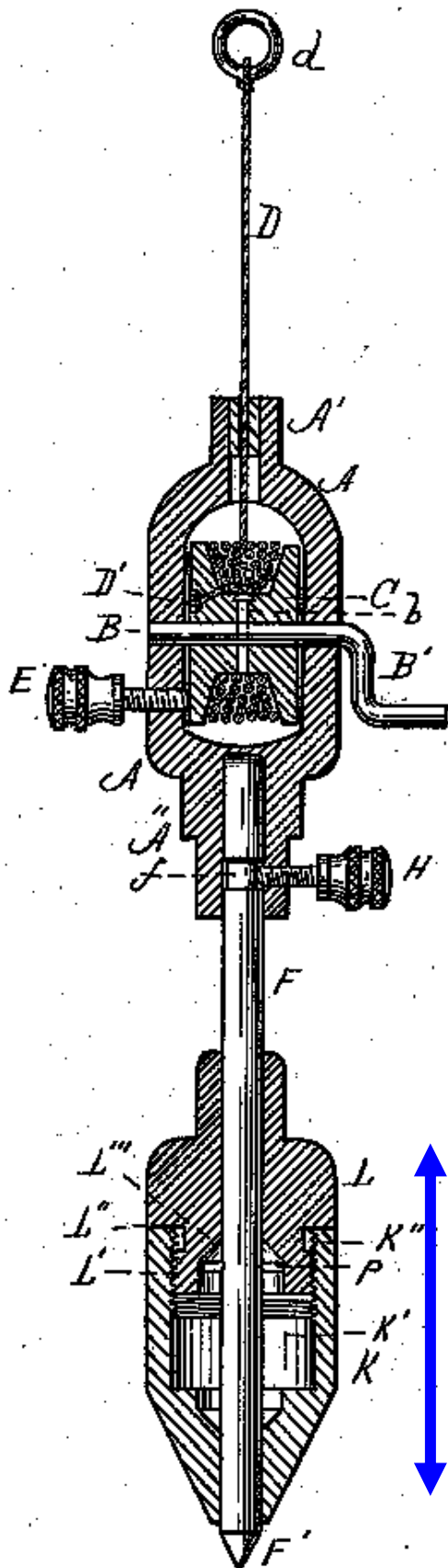


Fig. 2.

The produced plumb bob is not exactly the same as the patent drawing. The body K and L (plumb bob) can not move up and down along the rod. The reason why it should move see next page. I did not understand why it is necessary to bring the rod down in a hole.



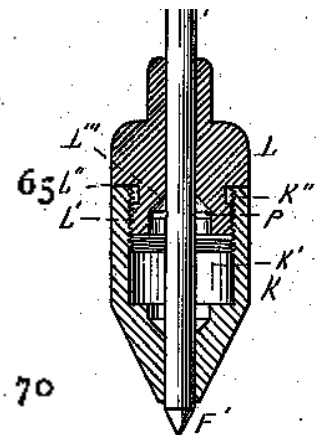
PATENT NEWS especially for PLUMB BOB COLLECTORS

This invention relates to an improved construction whereby the plumb-cord may be wound upon a reel, so as to prevent tangling or knotting, and may be unwound to any length desired and the reel held stationary at the desired point, and whereby the bob may be centered in any desired hole, countersunk or otherwise.



WHY?

As the bob is bored to receive the spindle it is thus allowed to move up thereon until the pin P comes in contact with the lower wall of the chamber K'. Thus the point F' of the spindle can be dropped into an opening or hole and brought to the center thereof by the conoidal form of the lower end of the bob, the point of such spindle being allowed to reach to the bottom of the hole by the provision above described for relative vertical play between the bob and the spindle.



When the plumb-bob is not in use, the cord B is wound upon the reel C, and when the device is to be used the set-screw E is loosened and the cord allowed to be unwound to the desired extent, when the set-screw E is again tightened and the reel held stationary.

The spindle may be removed by loosening the set-screw H and the bob removed from the spindle by unscrewing the upper portion L. All the parts of this device are preferably made of metal.

Aluminium
and brass

THE HANDY PLUMB BOB
PATENTED JUNE 22, 1897.

No staging to build, no step-ladder to hunt up. You can stand on the floor and plumb down from a line of shafting, whether running or stationary, directly from the centre to the floor, or from any point less than 20 feet high.

They are a nice thing for surveying instruments, as you can raise and lower them and hold them at any point.

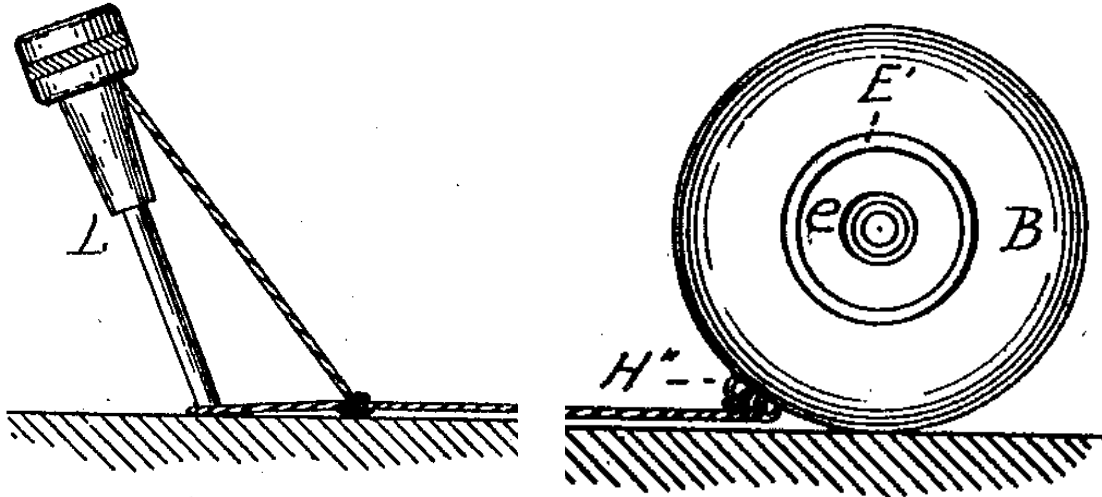
THE REEL HAS FT. OF LINE. WEIGHT OF THE PLUMB BOB OZ.

MANUFACTURED BY
S. W. WILCOX, MILFORD, MASS.

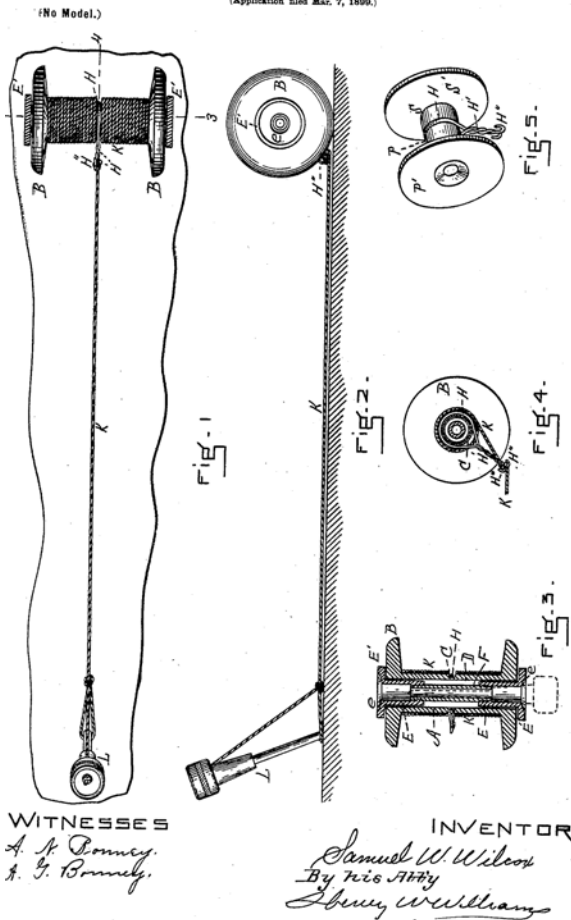
PATENT NEWS especially for PLUMB BOB COLLECTORS

The same inventor Samuel Wilcox got another patent in 1899
"REEL FOR CHALK LINES, PLUMB BOBS &c"

Very interesting is the kind how he holds the line close to the bottom.



No. 625,484. S. W. WILCOX. Patented May 23, 1899.
REEL FOR CHALK LINES, PLUMB BOBS, &c.
(Application filed Mar. 7, 1899.)

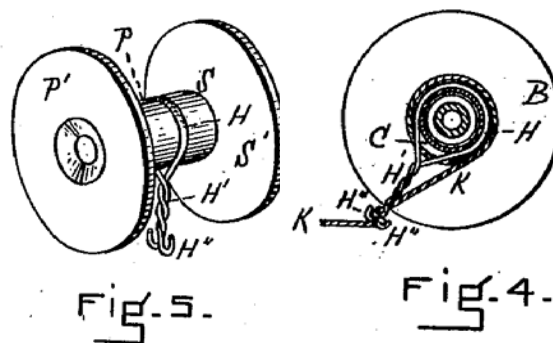


WITNESSES
A. N. Bonney,
J. G. Bonney,

INVENTOR
Samuel W. Wilcox
By his Atty
Sperry Williams

In practical operation the awl L is placed in 60 position, as indicated in Figs. 1 and 2, and the chalk-line K unwound by pressing the thumb and a finger of one hand against the outer surfaces e of the flange E' of the thimbles E and allowing the reel to be rotated on said 65 thimbles by the line. When the desired length of line has been unwound, the unwound portion next the barrel is caught over the hooks H'' in any suitable manner, so that it cannot slip, thus preventing any more of the 70 line from being unwound from the reel. The line or cord being thus held firmly at each end, the reel is lowered to the floor and the cord snapped in the ordinary manner.

In applying my invention to a plumb-bob 75 reel, as indicated in Fig. 5, the reel consists simply of a pair of barrels or thimbles P and S, provided with the flanges P' and S', one thimble being screwed into the other and one being provided with a groove exactly similar to the groove C, by means of which the appli- 80 ance H H' H'' is secured. Of course in using this reel the flanges slip between the finger and thumb until the cord has been caught around the hook. 85



PATENT NEWS especially for PLUMB BOB COLLECTORS

*Nelson has another English patented plumb bob with winder from 1896. Inventor **SMETHWICK**. Unfortunately I could not find the patent in the British Patent Office. Actually I come back to 1900.*



PATENT NEWS especially for PLUMB BOB COLLECTORS

On ebay France I found some similar old forged winders, but without a brake. They are looking nice, but the use of these tools seems to be very limited. The winder is not fixed to the plumb bob, but separate:

